

# AIAMSWP

NEWS LETTER YEAR 2024-25 VOLUME 6



## Generations of Care:

THE LEGACY AND FUTURE OF Professional Social Work in Healthcare



ALL INDIA ASSOCIATION OF  
MEDICAL SOCIAL WORK PROFESSIONALS

Chief Editor  
**Shri Raghavendra Rai**

Editor  
**Shri Sanjay Bhonge**

Design & Graphics  
**Shri Sumit Akotkar**

**Published by**

Printed and Published on the behalf of the All India Association of Medical Social Work Professionals, New Delhi

**Registered Office:**

House No-107, SFS, DDA Flats, Yasuf Sarai, New Delhi

Secretariat Office: Department of Ophthalmology, Level III, Block D, Government Medical College & Hospital Chandigarh

Web: [www.aiamswp.org.in](http://www.aiamswp.org.in)

Email: [gsaiamswp@gmail.com](mailto:gsaiamswp@gmail.com)

Contact No: 08054434328, 07889023356

# Index

1. Presidents Message	1
2. General Secretary Message	1
3. Editorial: Forging the Path Ahead: The Integral Role of Medical Social Work in a Changing India	2
4. Special Article:	3
a. Bridging Generations: Evolution, Trends, Barriers and Future of Social Work in Health Care	
b. National Commission for Allied and Healthcare Professions: A Pathway for the Social Work Profession in India's Healthcare System	
5. Annual Conference:	9
a. 10th Annual Conference of Medical Social Work Professionals	
b. Research Paper Awards at 10th Annual Conference of AIAMSWP	
6. Academic and Advocacy	11
a. AIAMSWP Advocacy with NIHFWS Secures Specialized Training for Medical Social Work Professionals	
b. AIAMSWP participation in 10th National Training Workshop on Inclusive Health care with Kenya Medical Social Workers Association (KEMSWA)	
7. AIAMSWP: Championing Uniform Nomenclature for Medical & Psychiatric Social Work	11
8. Recognitions:	15
a. Indian Journal of Health Social Work Gains UGC-CARE Recognition, Bolstering the Discipline's Academic Standing	
b. AIAMSWP registered on Darpan Portal	
9. Annual Governing Body Meeting	16
10. New Governing Body 25-27	17
11. OBITUARY: In Grateful Remembrance of Prof. R. K. Upadhyay	18
12. World Social Work Day 2024 and Activities of Zonal Committees	20

## Presidents Message



**Dear Members,**

It gives me immense pleasure to present this annual edition of the AIAMSWP Newsletter, inaugurated during our conference. This publication reflects the dedication, progress, and collaborative spirit that define our association and the field of Medical and Psychiatric social work.

Over the past year, AIAMSWP has continued to uphold its core values of professionalism, service excellence, and collective growth. Through the active participation and unwavering commitment of our members, we have made meaningful strides in strengthening our community and advancing our professional practice.

I extend my heartfelt gratitude to each one of you for your continued support, contributions, and belief in our shared mission. Let us continue to work together to uphold the highest standards of our profession and make a lasting difference in the lives we touch.

**Warm regards,**

**Poonam Dhanda**  
**President, AIAMSWP**

## General Secretary Message



**Dear Members,**

It gives me immense pleasure to present this annual edition of the AIAMSWP Newsletter, inaugurated during our 11th Annual National Conference scheduled to be held on 31 October -1st November 2025 at AIIMS Jodhpur, Rajasthan. This issue not only highlights the milestones of the past year but also celebrates the collective efforts that continue to strengthen our association and the profession of medical and psychiatric social work.

I am proud to share that our journal, the Indian Journal of Health Social Work, has been officially indexed in the UGC CARE List as of July 2024—an important recognition of the quality and relevance of our scholarly work. Additionally, we have welcomed around 30 new life members from across the country, a sign of the growing reach and impact of AIAMSWP.

These achievements are a testament to the hard work, dedication, and unity of our Governing Body and the entire AIAMSWP family. Your continued support and active participation have been instrumental in taking the association to greater heights.

Let us keep this spirit of collaboration alive as we move forward to achieve even more in the years to come.

**Warm regards,**

**Raghavendra Kumar Rai**  
**General Secretary, AIAMSWP**





## Editorial

### Forging the Path Ahead: The Integral Role of Medical Social Work in a Changing India

Dear Friends Greetings from the editorial desk of All India Association of Medical Social Work Professionals!

It gives me immense pleasure to present this edition of Newsletter. Which showcase the various activities conducted by the association for the academic, professional welfare of medical social workers serving pan India in different institutions.

As we navigate the complex and evolving landscape of Indian healthcare, the role of the Medical Social Work Professional (MSW) has never been more critical. We stand at the intersection of clinical medicine and the lived human experience, tasked with the vital duty of ensuring that healthcare is not merely a clinical transaction but a holistic, compassionate, and equitable process. Our work forms the essential bridge between hospital walls and community life, making us indispensable agents of health and well-being.

Our contributions are particularly pivotal in several key domains. In the realm of Mental Health, we are the first line of psychosocial support, conducting assessments, providing counselling, and linking individuals and their families to essential resources. We work to de-stigmatize mental illness and facilitate a continuum of care that extends beyond the outpatient department. Within Geriatric Health, we address the unique challenges of an aging population, from managing chronic illnesses and navigating healthcare systems to tackling issues of isolation, elder abuse, and palliative care needs. We advocate for the dignity and autonomy of our elderly, ensuring their golden years are met with support and respect.

The fight against Substance Abuse sees us engaged at every level—from prevention and awareness campaigns in communities to facilitating interventions, providing family therapy, and supporting reintegration and rehabilitation. Our holistic approach is crucial for breaking the cycle of addiction. Furthermore, in the Prevention and Control of Public Health Issues, be it managing the spread of infectious diseases like TB and HIV/AIDS or addressing the surge in non-communicable diseases, our role in community mobilization, health education, contact tracing, and ensuring treatment adherence is unparalleled. We translate public health policies into actionable, community-centric programs.

However, the path forward is lined with significant challenges. India's epidemiological transition, the rising burden of mental health issues, the needs of a growing geriatric population, and the persistent inequities in healthcare access demand that we evolve. Future challenges include integrating more deeply with digital health platforms, advocating for stronger policy frameworks that recognize our role, and combating the burn-out and resource constraints that often plague our profession.

In this dynamic scenario, the role of the All-India Association of Medical Social Work Professionals is paramount. Our Association must be a catalyst for change.

- 1. Advocacy & Policy Influence:** Lobbying for the formal integration of MSWs in all healthcare settings and influencing national health policies to include psychosocial components.
- 2. Continuous Professional Development:** Organizing specialized training, workshops, and certificate courses in emerging areas like gerontological social work, digital counselling, and public health leadership to equip our members for future demands.
- 3. Building a Robust Network:** Creating a national platform for knowledge sharing, mentorship, and support to foster collaboration and prevent professional isolation.
- 4. Promoting Research & Evidence:** Encouraging and publishing research in our UGC-CARE recognized "Indian Journal of Health Social Work" to build a strong, indigenous evidence base for our practices.

The journey ahead is demanding, but it is also filled with opportunity. Let us move forward with renewed vigour, fortified by our shared purpose and the unwavering belief that social work is not just an adjunct to medicine, but its very soul. Together, as a unified professional body, we can rise to these challenges and continue to be the compassionate, skilled, and resilient backbone of a truly holistic Indian healthcare system.

# BRIDGING GENERATIONS: EVOLUTION, TRENDS, BARRIERS AND FUTURE OF SOCIAL WORK IN HEALTH CARE

Devika K, M. Phil. Trainee, Department of PSW, CIP, Ranchi,  
Dr. Narendra Kumar Singh, Sr. PSW Officer, Department of PSW, CIP, Ranchi, Chief Editor,  
IJHSW & Zonal Secretary (East) of AIAMSWP

## INTRODUCTION

According to the International Federation of Social Workers (2014), **“Social work is a practice-based profession and an academic discipline that promotes social change and development, social cohesion, and the empowerment and liberation of people.”** The principles of social justice, human rights, collective responsibility and respect for diversity are central to its practice. When discussing the dynamic field of social work and its legacy in health care, it is important to understand what social work as a practice and profession entails. The goal of social work, as both a practice-based profession and an academic field, is to improve the well-being of individuals, families, groups, communities, and society at large by addressing their biopsychosocial needs (Payne, 2020). Social work integrates knowledge from liberal arts, social sciences, psychology, sociology, law, community development and health sciences to engage with systems and policies, conduct assessments and implement interventions that promote social functioning and justice (Karban, 2016).

The 19th century saw the professionalization of social work, rooted in grassroots organizing and philanthropic efforts (Trattner, 1999). However, responses to social needs—through charities, alms-houses and religious institutions—predated this development. The effects of the Industrial Revolution and the Great Depression highlighted widespread poverty, child labour, and health disparities, pushing social work to evolve as a distinct field (Cannon, 1952).

Social work has since expanded to diverse fields such as education, community development, policy, and health care. In the health sector, social work bridges clinical care with psychosocial support, addressing both emotional and environmental challenges that influence health outcomes (Browne & Gehlert, 2019). The foundational principles of health care social work—person-in-environment, empathy, and cultural competence—guide practitioners in promoting equity and dignity across all stages of a patient’s medical journey (WHO, 1946).

## HEALTH CARE SOCIAL WORK: HISTORICAL OVERVIEW

The profession of health care social work has roots in the early 20th century evolving alongside modern medicine and public health systems in the United States and the United Kingdom (Cabot & Cannon, 1915; Cannon, 1952). Ida Cannon, working under Dr. Richard Cabot at Massachusetts General Hospital in 1905, is widely recognized as the pioneer of medical social work. Her efforts emphasized addressing the social and psychological determinants of health, bridging the gap between hospital care and community well-being (Cabot & Cannon, 1915).

By the 1920s–1940s, the discipline became institutionalized. Hospitals began formally employing trained social workers to offer psychosocial support. The First World War and the Great Depression emphasized the connection between poverty, living conditions, and illness, reinforcing the need for comprehensive care (Trattner, 1999). In 1918, the establishment of the American Association of Hospital Social Workers marked a significant milestone in professionalizing medical social work (Ruth, Marshall, & Velásquez, 2012).

In India, formal training in medical and psychiatric social work began with the founding of the Tata Institute of Social Sciences (TISS) in 1948, which played a key role in integrating social work into national health systems (Desai, 1976). The field expanded beyond hospitals during the 1950s–1970s into community health, mental health, and rehabilitation services (Rao, 2010). The World Health Organization (1946) definition of health as a state of “**complete physical, mental, and social well-being**” further validated the **holistic approach that social work embodies**. From the 1980s onwards, social work became increasingly integrated into community-based and mental health care, influenced by George Engel’s (1977) biopsychosocial model, which highlighted the interconnectedness of biological, psychological, and social factors. In India, social workers became integral to national programs such as the National AIDS Control Programme (NACP) and the National Rural Health Mission (NRHM), providing counselling, health education, and outreach (Kumar, 2012).

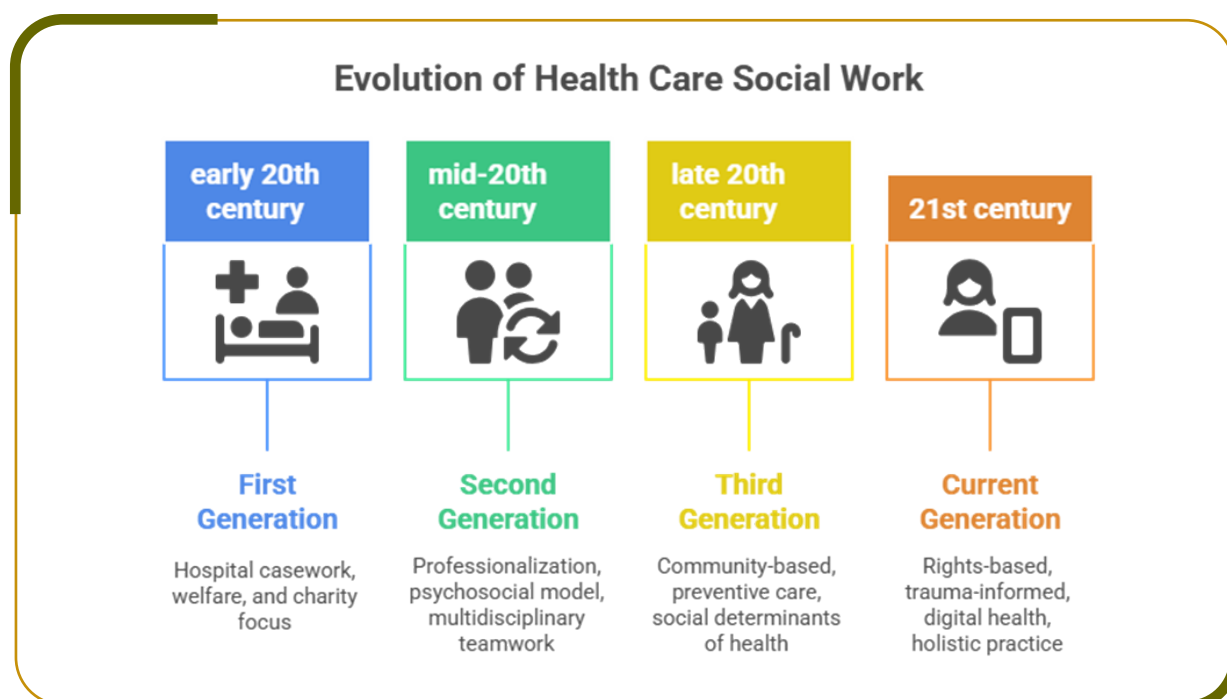
Recent decades have seen a shift toward rights-based and advocacy-oriented practice, with social workers contributing to policy, research, and evidence-based interventions (Browne & Gehlert, 2019). The Mental Healthcare Act (2017) in India further legitimized psychiatric social workers as qualified mental health professionals, emphasizing their role in multidisciplinary teams (Rao, 2010).

### GENERATIONS OF CARE AND TRENDS IN HEALTH CARE SOCIAL WORK

The evolution of health care social work can be viewed through successive generations of care, each reflecting changes in social values and health system priorities (Payne, 2020).

**First Generation (early 20th century):** Focused on hospital casework, welfare and charity. Social workers helped patients navigate poverty, housing, and treatment access, functioning primarily in a supportive role under the medical model (Cabot & Cannon, 1915).

**Second Generation (mid-20th century):** The field became increasingly professionalized, with the rise of the psychosocial model. Social workers began addressing emotional, social, and familial aspects of illness. Multidisciplinary teamwork became standard, and formal training programs in medical and psychiatric social work were established (Cannon, 1952; Browne & Gehlert, 2019).



**Third Generation (late 20th century):** The emphasis shifted toward community-based and preventive health care. Social workers began addressing the social determinants of health, such as poverty, education, environment, engaging, advocacy, health promotion and empowerment-based practice (Ruth et al., 2012; WHO, 2008).

**Current Generation (21st century):** Practice is characterized by rights-based, trauma-informed, and evidence-informed approaches. Social workers utilize technology and telemedicine to improve access to care, particularly since the COVID-19 pandemic (Browne & Gehlert, 2019). The focus has broadened to include palliative care, end-of-life support, and digital health interventions, integrating advocacy with clinical practice. Across these generations the profession has evolved from hospital-centred charity to community-based empowerment and from reactive care to preventive & holistic practice (Payne, 2020).

## **BARRIERS TO CARE IN HEALTH CARE SOCIAL WORK**

**Despite its progress social work in health care faces multiple barriers that affect its scope and effectiveness.**

- **Role recognition:** Social workers are often undervalued in health settings and excluded from decision-making processes, limiting their contribution to patient care (Congress & Kim, 2016).
- **Resource limitations:** Many faces overwhelming caseloads, insufficient funding, and limited community resources particularly in public hospitals in India (Kumar, 2012).
- **Institutional and policy barriers:** A lack of standardized job descriptions, policy representation, and professional frameworks leads to inconsistent practice and poor recognition (Doran & Litt, 2013).
- **Training and development gaps:** While programs in medical and psychiatric social work exist, ongoing professional development and supervision opportunities remain inadequate (Rao, 2010).
- **Cultural and social stigma:** Traditional beliefs and stigma surrounding illness and mental health often deter individuals from seeking help, complicating intervention efforts (Karban, 2016).
- **Occupational stress and burnout:** Compassion fatigue and emotional exhaustion are common among social workers emphasizing the need for supportive supervision and self-care mechanisms (Congress & Kim, 2016).

These barriers collectively constrain the potential of social workers to address the social determinants of health underscoring the need for systemic reforms and better resource allocation (WHO, 2021).





## RECOMMENDATIONS AND FUTURE DIRECTIONS

To strengthen the role of social work in health care several strategies are proposed:



- **Policy recognition and inclusion:** Governments should formalize the role of social workers within multi-disciplinary teams defining clear duties and progression paths (Rao, 2010).
- **Curriculum modernization:** Social work education should integrate evidence-based practice, digital health and policy advocacy to prepare practitioners for contemporary challenges (Payne, 2020).
- **Service integration:** Social work should be embedded across all levels of care primary, secondary and tertiary—to ensure continuity of support (Browne & Gehlert, 2019).
- **Research and data-driven advocacy:** Systematic studies demonstrating social work's impact on patient outcomes and cost-effectiveness can inform policy and funding decisions (Ruth et al., 2012).
- **Technology and innovation:** Tele health and digital platforms should be expanded to enhance outreach and access in underserved areas (WHO, 2021).
- **Professional well-being:** Establishing peer support networks, supervision structures, and self-care initiatives can help mitigate burnout and strengthen workforce resilience (Congress & Kim, 2016).

The future of health care social work lies in embracing interdisciplinary, rights-based and holistic approaches that integrate social, psychological and medical dimensions of care (Browne & Gehlert, 2019).

## CONCLUSION

From its origins in charitable assistance to its present role as a professional, evidence-based discipline, health care social work has evolved into a cornerstone of holistic care. Social workers now function as key members of multidisciplinary health teams across the world, including India, contributing to mental health, rehabilitation, palliative care, and community health programs (Desai, 1976; Rao, 2010). However, barriers such as limited recognition, inadequate training, and policy constraints continue to challenge the field. Addressing these requires systemic reforms investment in professional development and a stronger emphasis on research and advocacy (Congress & Kim, 2016; WHO, 2008).

Looking ahead, the social work professions must continue to promote patient empowerment, equity, justice. By leveraging technology and evidence-based practices, social workers can bridge gap between medical treatment and social realities. Through sustained advocacy and interdisciplinary collaboration, they will remain essential in building compassionate, equitable and sustainable health care systems.



# National Commission for Allied and Healthcare Professions: A Pathway for the Social Work Profession in India's Healthcare System

**Dr. Om Prakash Giri, Founder Member & Former General Secretary, AIAMSWP & Medical Social Welfare Officer, Department of Psychiatry, PGIMER, Chandigarh.**

## Introduction:

The inclusion of Social Work under the National Commission for Allied and Healthcare Professions (NCAHP) Act, 2021 represents a historic milestone for India's healthcare system. For the first time, **social workers—medical, psychiatric, and clinical—are**

**formally recognized as integral healthcare or allied health professionals, depending on their training and competencies.** This article explores how the Act can redefine the professional identity of social workers in healthcare, its policy and educational implications, and the opportunities and challenges that lie ahead.

The NCAHP Act offers a rare opportunity to redefine social work as a scientific, evidence-based healthcare profession. With active engagement and leadership, health social workers can shape the future of India's healthcare system.

## Policy Recognition: A New Era for Health Social Work:

The NCAHP Act, 2021 marks a major breakthrough for the social work profession, officially recognizing medical, psychiatric, and clinical social workers as healthcare or allied health professionals. No longer seen as auxiliary staff, registered social workers will now hold regulated titles and gain legal parity with other health professionals through a national Central Register. Notably, social work was absent in the 2018 draft of the Bill—its inclusion in the final Act reflects the success of sustained advocacy by the All India Association of Medical Social Work Professionals (AIAMSWP). With the Supreme Court mandating nationwide implementation, professional regulation of health social work is now a national priority.



## Opportunities for Career Growth and Education:

The NCAHP introduces a competency-based, standardized education model that paves the way for significant academic and career growth in health social work. With the Ministry of Health already rolling out such curricula in allied health fields, this shift promises structured academic pathways, improved quality assurance, and national mobility for social work professionals. Registered social workers stand to gain standardized roles, greater recognition, and potentially better pay. This alignment with healthcare standards may also prompt universities to revise their curricula to include specializations like mental health, geriatric care, palliative care, and rehabilitation. With over 131,000 students enrolled in social work programs across 800+ institutions (AISHE 2021–22), the profession has a strong foundation to meet evolving healthcare demands. A dedicated Health Social Work curriculum, currently under development by a Ministry of Health task force, will further streamline education and professional competencies in the sector.

## Strengthening Professional Identity:

The NCAHP Act grants legal and ethical identity to health social workers, enhancing their visibility within interdisciplinary healthcare teams. Registered professionals will function under a unified code of ethics and regulatory oversight, fostering both professional pride and accountability. This policy-level recognition also helps to dispel misconceptions that social work is merely charitable or informal assistance. Over time, the formation of a national registry and the inclusion of social workers in professional councils will provide the profession with a collective voice in shaping healthcare policies and multidisciplinary practice standards.

### **Clinical Social Work in India:**

Clarity needed for a Promising Role: A significant new development under the Act is the inclusion of 'Clinical Social Worker' as a distinct category. Until now, Indian practice was typically split between Medical and Psychiatric Social Work, with no formal academic or licensure track for "Clinical Social Work." On the positive side, this term aligns Indian social work nomenclature with international standards, where clinical social workers often play therapeutic and counseling roles. This inclusion could help raise the scientific profile of the profession and motivate academic institutions to create new competency-based curricula.

However, the ambiguity surrounding the role is concerning. Current educational frameworks do not define the scope, training hours, or competencies for Clinical Social Work in India. Without clear guidelines, there is a risk of overlap and confusion with existing designations, potentially fragmenting the profession or diluting its focus. To address this, bodies such as AIAMSWP must collaborate with the NCAHP to clearly define, structure, and implement Clinical Social Work as a specialized domain within the Indian context. If done thoughtfully, this inclusion could be transformative; if left vague, it may remain a nominal label without substance.

### **Challenges and Ongoing Issues:**

Despite its promise, the NCAHP framework faces several hurdles in implementation. Many states have yet to establish their State Allied Health Councils, causing delays in registration and regulatory processes. Additionally, the NCAHP portal currently functions only as a data collection platform, lacking the authority of an official professional register. Overlapping jurisdictions with existing laws, such as the Mental Healthcare Act and the Rehabilitation Council of India Act, have created ambiguity around professional roles and regulatory boundaries. Furthermore, the Act currently applies only to health-care-based social work, excluding practitioners working in sectors like education, justice, and development. Nonetheless, progress is being made—Karnataka became the first state to launch its Allied Health Council in April 2025, setting an example for others. Navigating this evolving policy landscape will require sustained advocacy and coordinated efforts between the Ministry of Health, NCAHP, and professional bodies such as AIAMSWP.

### **Conclusion:**

The NCAHP Act marks a turning point for the health social work profession in India. It provides long-awaited policy recognition, opens doors for standardized education and credentialing, and establishes an institutional framework for accountability and quality assurance. The inclusion of Clinical Social Work broadens the profession's horizon, provided that its scope is clearly defined and thoughtfully integrated into existing educational and practice frameworks. Moving forward, successful implementation will require sustained collaboration among the Ministry of Health, NCAHP, and professional associations like AIAMSWP. If executed effectively, this Act could secure the professional, regulated, and respected status that health social workers in India have long deserved.

### **Strategic Engagement by AIAMSWP:**

**The All India Association of Medical Social Work Professionals (AIAMSWP) is taking proactive steps to support the implementation of the NCAHP Act and strengthen the role of health social workers in India. Key initiatives include organizing workshops on NCAHP registration and regulatory procedures, launching advocacy campaigns to promote the formation of state-level Allied Health Councils, and facilitating curriculum consultation sessions on the proposed Health Social Work framework. Social work professionals are encouraged to engage with these efforts by registering on the NCAHP portal (<https://ncahp.abdm.gov.in>), participating in advocacy through AIAMSWP networks, and sharing feedback on the evolving curriculum by emailing [gsaiamswp@gmail.com](mailto:gsaiamswp@gmail.com).**

### 10th Annual Conference of Medical Social Work Professionals



The All-India medical social work professionals, in collaboration with the Social Work Department of Mahatma Gandhi International Hindi University, recently organized the 10th Annual Conference at Kasturba Hall.

The conference was presided over by Prof. Bhimrao Metri, Vice Chancellor of Mahatma Gandhi International Hindi University. The event was graced by several distinguished chief guests, including Prof. Hariram Tripathi, Vice Chancellor of Kavi Kulguru Kalidas Sanskrit University, Ramtek; Dr. Lalit Bhushan Waghmare, Vice Chancellor of Dutta Meghe Institute of Medical Science, Wardha; Dr. Mansi Kavimandan; Dr. Amit Dharvesh Katheria; Prof. Banshidhar Pande; Dr. Omprakash Giri; and Shri Raghvendra Kumar Rai.

Addressing the gathering on the occasion, Prof. Bhimrao Metri stated, "India is the country of youth and the whole world is looking at our country as the leading nation. Social work and our public welfare is fundamental duty which is in our DNA. We have the best culture and the festivals which provide us stamina, strength and vigour. Social progress and social peace are our aim and goal. Our saints have given importance to the welfare of people."





Echoing the conference's central theme, Dr. Lalit Bhushan Waghmare also expressed his views on social welfare and its profound importance for the people of the country. The inaugural session featured an introductory speech delivered by Dr. Banshidhar Pande, while the proceedings of the conference were conducted by Dr. Shivsingh Baghel.

The two-day conference witnessed significant participation, with nearly 200 delegates from various states across the country. The attendees included professors, scholars, officers from various departments, and students. The academic sessions were enriched by the presentation of approximately 80 research papers and research posters, facilitating a robust exchange of knowledge and ideas in the field of medical social work.



## Research Paper Awards at 10<sup>th</sup> Annual Conference of AIAMSWP



Best Paper Award in Mental Health To Ms Khusboo Shah from CIP Ranchi during 10 ANC of AIAMSWP



Best Paper Award for social work practice in Hospital Settings To Dr Dina Nath Yadav



Best Paper Award for Social Work Student/ Scholar category To Mr Gaurav Kumar

### Advocacy of AIAMSWP for promoting professional trainings



#### AIAMSWP Advocacy Secures Specialized Training for Medical Social Work Professionals

In a significant achievement for the profession, the sustained advocacy efforts of the All India Association of Medical Social Work Professionals (AIAMSWP) have culminated in the successful organization of a specialized training course by the National Institute of Health and Family Welfare (NIHFW).

The NIHFW, an apex technical institute under the Ministry of Health and Family Welfare, Government of India, conducted a "Training Course on Patient Care Management and Welfare for Medical Social Workers and Counsellors" from February 5th to 6th, 2024. The primary objective of this initiative was to enhance the knowledge and practical skills of medical social work professionals, enabling them to execute their roles in patient care management and welfare with greater efficacy. A cohort of seventeen medical social work professionals participated in this inaugural session, benefiting from the targeted curriculum.





This training program is a direct result of the strategic advocacy and collaborative engagement between AIAMSWP and the NIHFW. The Institute, which is dedicated to promoting national health and family welfare programs through education, training, research, and advisory services, responded positively to the Association's proposal.

The conceptualization and development of this training course were greatly facilitated by the contributions of Shri. B.R. Shekhar, Former President of AIAMSWP. Shri. Shekhar played a pivotal role in designing the course framework to ensure its relevance to the contemporary challenges faced by professionals in the field. He was ably supported in this endeavor by Shri. Raghavendra Kumar Rai, General Secretary of AIAMSWP. Together, they provided sustained effort, critical inputs, and unwavering support throughout the advocacy process with the NIHFW, ensuring the program's successful launch.

This milestone marks a positive step towards strengthening the capacity of medical social workers across India and underscores the importance of professional bodies in shaping impactful developmental initiatives.



## AIAMSWP participation in 10th National Training Workshop on Inclusive Health care

The Kenya Medical Social Workers Association (KEMSWA) successfully concluded its 10th National Training Workshop, themed "Empowering Communities for Inclusive Healthcare: The Role of Medical Social Work in Kenya's Universal Healthcare Journey." The three-day event, held from April 16 to April 19, 2024, at the Meru Slopes Hotel, brought together over 100 participants, including medical social workers, healthcare professionals, and stakeholders, in both physical and virtual attendance formats. The workshop, hosted by Elizabeth Chelimo, National Chairperson of KEMSWA, aimed to strengthen the role of medical social work in advancing Kenya's Universal Healthcare agenda. It provided a platform for knowledge exchange, skill-building, and networking to address pressing healthcare challenges, particularly in underserved communities.

**Distinguished Guest Speakers** The event featured prominent speakers whose expertise enriched the discussions.

- **Mary Bitta**, an Implementation Scientist in Mental Health at the Kenya Medical Research Institute (KEMRI), shared insights on integrating mental health services into community healthcare frameworks, emphasizing the need for accessible and inclusive mental health support.
- **Dr. Teresia Mutavi**, PhD, Senior Lecturer in Psychiatric Social Work, highlighted the critical role of psychiatric social work in addressing mental health stigma and promoting holistic care within Kenya's healthcare system.
- **Raghavendra Kumar Rai**, Honorary General Secretary of the All-India Association of Medical Social Welfare Professionals (AIAMSWP) and Medical Social Welfare Officer at Government Medical College & Hospital, Chandigarh, India, joined as a guest speaker. Rai brought an international perspective, sharing best practices in medical social work and community empowerment from India's healthcare system.

### Key Highlights

The workshop featured a blend of keynote addresses, panel discussions, and interactive sessions, focusing on: Strengthening community-based healthcare models to support Kenya's Universal Healthcare goals. Enhancing the capacity of medical social workers to address social determinants of health, such as poverty, gender inequality, and access to care.

Participants engaged in practical workshops to develop skills in patient advocacy, psychosocial support, and community outreach. The hybrid format ensured broader participation, allowing professionals from across Kenya and beyond to join virtually. A Step Toward Inclusive Healthcare. Elizabeth Chelimo, in her opening address, underscored the pivotal role of medical social workers in bridging gaps in healthcare access. "Medical social workers are at the heart of Kenya's Universal Healthcare journey. By empowering communities and addressing barriers to care, we can create a more equitable healthcare system," she said. The event also provided a platform to discuss policy recommendations for integrating medical social work into national healthcare frameworks, with a focus on mental health, chronic disease management, and support for marginalized groups. Impact and Way Forward The 10th National Training Workshop marked a significant milestone for KEMSWA, reinforcing its commitment to advancing medical social work in Kenya. Participants left the event equipped with new tools, networks, and strategies to drive community-led healthcare initiatives. KEMSWA plans to build on the success of this workshop by organizing more training programs and advocacy campaigns to support Kenya's Universal Healthcare goals. The association also aims to foster international collaborations, inspired by contributions from global experts like Raghavendra Kumar Rai.



## AIAMSWP: Championing Uniform Nomenclature for Medical & Psychiatric Social Work

The All-India Association of Medical Social Work Professionals (AIAMSWP) is at the forefront of a dedicated and strong advocacy movement to standardize the nomenclature of the Medical and Psychiatric Social Work cadre across India.

### Our Core Mission:

To establish and maintain professional standardization at a broad level, ensuring a unified identity for medical social work professionals nationwide.

### A Landmark Achievement:

Through persistent advocacy, AIAMSWP has successfully championed the goal of implementing a uniform nomenclature: Medical Social Welfare Officer and Psychiatric Social Welfare Officer in various medical institutions across the country.

### Pioneering Leadership:

The campaign was spearheaded by the commendable efforts of Mr. Sushil Kumar Mishra, who successfully advocated for the first crucial change from "Medical Social Worker" to "Medical Social Welfare Officer." His pioneering role serves as an inspiration and model for all AIAMSWP members.

### A Growing National Consensus:

Following the initial implementation at Safdarjung Hospital (as per the MoHFW decision), Chandigarh became the first state/UT to adopt this reform. This success has created a domino effect, leading to widespread adoption.

### Institutions Adopting the Uniform Nomenclature:

The following premier institutions have adopted the standardized nomenclature thanks to AIAMSWP's advocacy:

#### Central Institutions, Delhi:

Safdarjung Hospital  
Dr. RML Hospital  
Kalawati Saran Children Hospital  
AIIMS New Delhi

#### Premier Institutes in Chandigarh

Govt. Medical College and Hospital,  
Chandigarh  
PGIMER, Chandigarh

#### Other States and Institutions:

CIP Ranchi, Jharkhand  
AIIMS Bhatinda, Punjab  
Uttarakhand Government  
(State-wide implementation)

AIAMSWP remains committed to its mission of professional unity and standardization, and we continue to work towards ensuring this uniform nomenclature is adopted at every medical institution in India.

### Indian Journal of Health Social Work Gains UGC-CARE Recognition, Bolstering the Discipline's Academic Standing

In a significant development for the academic community, the Indian Journal of Health Social Work has been included in the prestigious University Grants Commission – Consortium for Academic and Research Ethics (UGC-CARE) list, effective July 2024. This achievement marks a notable milestone for the All-India Association of Medical Social Work Professionals (AIAMSWP), which oversees the publication.

This formal recognition serves to underscore the journal's sustained commitment to publishing high-quality, original research and its pivotal role in advancing the field of health social work across India.

The inclusion in the UGC-CARE list significantly enhances the journal's credibility and academic visibility, establishing it as a robust and trusted platform for researchers, practitioners, and scholars. It enables the wider dissemination of evidence-based knowledge and best practices that are crucial to the profession.

This accomplishment reflects the collective and dedicated efforts of the journal's editorial board, its panel of expert reviewers, the contributing authors, and the entire AIAMSWP community. Their unwavering commitment to maintaining rigorous academic standards has been instrumental in this achievement, thereby contributing substantively to the growth and recognition of health social work as a vital profession within the healthcare ecosystem of the nation.

#### UGC-CARE List

Journal Details	
Journal Title (in English Language)	Indian Journal of Health Social Work
Publication Language	English
Publisher	All India Association of Medical Social Work Professionals
ISSN	NA
E-ISSN	2582-1393
Discipline	Science
Subject	Health Professions (all)
Focus Subject	General Health Professions
UGC-CARE coverage years	from July-2024 to Present

Copyright © 2025 Savitribai Phule Pune University. All rights reserved. | Disclaimer

## AIAMSWP registered on Darpan Portal

The NGO Darpan is an online portal maintained by NITI Aayog in collaboration with the National Information Centre (NIC), serves as a central database for this Non-Profit Organisations, ensuring transparency and accountability in their operations. Every Non-Profit Organisation need to register on the portal. The AIAMSWP has also registered on Darpan portal this year.

Overview	
Organization Details	
Organization Name	ALL INDIA ASSOCIATION OF MEDICAL SOCIAL WORK PROFESSIONALS
Registered District (State)	SOUTH (Delhi)
Registration Year	2011
RC Expiry Date	Not Available
DARPAN Details	
DARPAN ID	01/2025/0758129
Date of Generation	09-08-2025
DARPANID Status	Active



## Annual Governing Body Meeting

Annual General Body Meeting of All India Association of Medical Social Work Professionals was conducted 27 December 2023 at 9 a.m. Kasturba hall , at Mahatma Gandhi International Hindi University , Wardha,

General Body meeting was chaired by the President, AIAMSWP In this meeting members discussed various issues for the progress of the association.

**Welcome to new Members of AIAMSWP**  
April 2024 to August 2025



S. Srinivasan  
Zunatha Banu A  
Moumee Jesmin  
Kaushalendra Pratap Singh  
S. Rajeswari  
Poonam Gupta  
Chabunhgbam Babina Devi  
Chongtham Pritam  
Shushanti Mutum  
Tesong Olive  
N. Srinivasan  
Vinita Roy  
Sapthami S.  
R. Vijay Kumar  
R. M. Sudhakara  
Nichita Kumari  
Raja Upadhyay  
Pankaj Puri  
Sandhya Prakash Durge  
Prasad Kannekanti  
Harjinder Kaur  
Vivek Johri  
Devaiah K. C.  
Harshitha D. S.  
Radha B. M.  
Chitkala Venkareddy  
Nupur  
Sumitra Sukesh Bhawe  
Shyam Singh  
Aarti Upadhyay  
Asim Anwer Ansari





## New Governing Body 25-27

<b>Patron :</b>	Dr. Anil Gosawami , New Delhi
<b>President:</b>	Ms. Poonam Dhanda, , New Delhi
<b>Vice President :</b>	Sh. Akhilesh Kumar Tripathi, Lucknow, Sh. Aftab Alam Shah , New Delhi
<b>General Secretary:</b>	Sh. Raghavendra Kumar Rai, Chandigarh
<b>Joint Secretary:</b>	Sh.Ambrish Kumar, Lucknow, Sh. Rajeev Maikhuri, New Delhi
<b>Treasurer:</b>	Sh. Jasvir Singh , Chandigarh
<b>Zonal Secretary</b>	(North-East) Sh. Subhasish Saha, Agartala, (Central) Dr S. K. Upadhyay, Etawah, (East) Dr. Narendra Kumar Singh, Ranchi, (West) Dr. Shankar M Mugave, Pune, (South) Ms. R. Srividhya, Puducherry (North) Ms. Asha Rani , Chandigarh
<b>Executive Member</b>	Dr. W. Ranbir Singh, Imphal, Dr. R. Jayalakshmi, Puducherry Dr. Nandkishor Santram Bhagat, Bhandara, Ms. Anjana Neglur, Mumbai Sh. Akhilesh Kumar Chaurasiya, New Delhi Sh. Shaurya Prakash, Mohania Kaimur, Sh. Raja Upadhyay, Samba, Sh. Rajesh Rathore, Bhopal, Sh. R. Vijay Kumar, Hassan,

## OBITUARY

### (In Grateful Remembrance of Prof. R. K. Upadhyay)



It is with deep sorrow and profound respect that we remember Prof. R. K. Upadhyay, a pioneering figure in the field of professional social work in India. Prof. Upadhyay played a foundational role in shaping the discipline of psychiatric social work in the country. In 1970, under his visionary leadership, he established the independent Department of Psychiatric Social Work (PSW) at the Central Institute of Psychiatry (CIP), Ranchi, and initiated the DPSW course a landmark step in professionalizing the field.

In the same year, in collaboration with his colleagues, he spearheaded the formation of the Indian Society of Psychiatric Social Work (IPSPW) at the national level and served as its first President. His commitment to advancing the profession was further evident in his role as the Chief Editor of the society's annual professional journal which he was instrumental in launching.

After leaving CIP in 1981, Prof. Upadhyay joined as a faculty member in the Department of Social Work at Mahatma Gandhi Kashi Vidyapith, Varanasi. Driven by his passion and leadership he later moved to Kurukshetra University, Kurukshetra where he established a new Department of Social Work and served as its first Head/Chairperson.

An erudite scholar, Prof. Upadhyay authored several valuable books in the field of Medical & Professional Social Work, leaving a rich legacy of academic contributions. After his superannuation he settled with his family in Kurukshetra, where he remained an enduring source of wisdom and inspiration.

Prof. Upadhyay, with his dynamic personality was not only a knowledgeable teacher but also an exemplary academician and mentor. His passing is a personal loss to many and a great loss to the entire social work profession.

We honour his memory by committing to his vision for the profession:

- Upholding the highest standards of professional practice in healthcare
- Creating platforms for continuous learning and research World Social work Day Celebration

# Upcoming Training Opportunity for Medical Social Work Professionals

## About the Institute

The National Institute of Health and Family Welfare (NIHFW) is a premier autonomous institute under the Ministry of Health and Family Welfare, Government of India. It has kept pace with the new thinking and substantially contributed to the health human resource development in the country. NIHFW serves as an apex 'Technical Institute' as well as a think tank to promote health and family welfare programmes in the country through education and training, research and evaluation, consultancy and advisory services, specialized projects, etc.



## Course Coordinating Team

Course coordinator : Dr. Sarita Gautam  
Course co-coordinators : Prof. Meerambika Mahapatro  
Prof. Rajesh Kumar  
Course Associates : Mrs. Rita Rani  
Dr. Sangeeta Mishra  
Mr. Rahul Sharma

## Venue of Training

Teaching Block, NIHFW

## Course fee

A course fee of Rs. 5000/- for each participant, to be borne by sponsoring states/organization/Participants through online transaction/DD payable to Director, NIHFW. The bank details are as follows: Name of Beneficiary: Director, NIHFW, Bank Name: SBI, NIHFW, Munirka, New Delhi, Account No.: 43901234540, Branch code: 01624, IFSC Code: SBIN0001624, MICR Code No.: 110002056

**TA/DA/other expenses have to be borne by the participant/sponsoring organization.**

## Accommodation

Boarding and lodging facilities at applicable rates may be provided to the participants only, within the Institute's Campus. Accommodation facility to the participants will be provided on prior request. The institute will provide working lunch during the training period. Hostel email: hostel@nihfw.org and reception phone number : 011-26165959, 26166441-ext-15

## Last Date of Receiving Nomination

5th November, 2025

Registration Link: <https://forms.gle/A8j9yHuAmEQaMSwC8>  
(Participants are requested to make their travel plans on receipt of confirmation from NIHFW)

Further correspondence to be addressed to:

**Dr. Sarita Gautam,**  
**Course Coordinator & Assistant Professor**  
**Department of Social Sciences, NIHFW**  
[saritagautam@nihfw.org](mailto:saritagautam@nihfw.org)

Phones: 26165959/26166441/26185696/2610773,  
Ext.: 384 Institute's Website: [www.nihfw.org](http://www.nihfw.org)

## Training Course on Patient Care Management & Welfare For Medical Social Workers and Counselors



**10<sup>th</sup> to 14<sup>th</sup> November 2025**



Department of Social Sciences  
The National Institute of Health and Family Welfare  
Munirka, New Delhi, 110067

## Introduction

Social worker and counselors are members of health care team who create a network among the doctor, patient, family and the community. They are working in health sector deals with psycho-social elements related with patients' health conditions and community health issues. The social aspects of illness are recognized in ways which fostered team work in patient care.

The role of social workers and counselors in health sector includes interdepartmental coordination, multidisciplinary teamwork, management of financial assistance, counseling and emotional support to the patient and his/her family members. They also help patients and their families to understand the illness and available treatment options, as well as the consequences of various treatments. Social worker and counselor assist in rehabilitation, psychosocial and economic assessment of patient, coordinate patient discharge and continuity of health care planning. Health promotion activities, community education, and referral to community resources are also part of their duties.

Social workers and counselors have active involvement and participation in global and national health challenges like natural disaster, epidemic and pandemic. They help to solve social problems in patients and their families to ensure their better health as well as well-being to enhance the patient satisfaction.

In response to these evolving health priorities NIHFW is organizing a training programme for social workers to develop their knowledge and skills to execute their role and meet the changing demands of health care delivery system in India and achieve the goals of National Health Mission.

## General Objective

To enhance the knowledge and skills of Medical Social Workers and Counselors regarding the patient care management and welfare.

## Specific Objectives

At the end of training the trainees will be able to:

- Discuss the steps and process of Social diagnosis of patient and their family.
- Explain the Health promotion at individual and community level.
- Demonstrate effective Interpersonal Communication skills to deal with the patients.
- Describe and demonstrate process and skills of Counselling for the patients.
- Discuss the process of arranging financial support to patient from government and non-government organizations.
- Recall the protocol and process of welfare of patients and welfare schemes of Government for patients.
- Discuss the process of facilitating Rehabilitation for disabled, destitute and orphan patients and Handling medico-legal Cases.
- Demonstrate the steps of conflict Management.

## Course Contents

- Social diagnosis of patient and their family
- Health promotion
- Interpersonal Communication skills
- Counseling process and skills.
- Arranging financial support to patient from government and non-government organizations
- Welfare of patients and welfare schemes of Government for patients
- Handling Medico-Legal Cases
- Social services in the situation of disaster/epidemic/ pandemic

## Methodology

Lecture & Discussions, Group work/Exercises/Presentation, Interactive sessions

## Nature of Participants

Medical Social workers and counselors working in public or private health care system and Medical Colleges / Institutes.

## How to Apply

Apply through registration link  
<https://forms.gle/A8j9yHuAmEQaMSwC8>  
or  
Send email to course coordinator along with particulars of candidate



# World Social Work Day 2024 and Activities of Zonal Committees



## महादलित बस्ती के बच्चों में पठन सामग्री वितरित

लखनऊ कार्यालय, विश्व सामाजिक कार्य दिवस के अवसर पर शहर की महादलित बस्ती में एचएचएफसी से संचालित सरल सेक्टर में मंगलवार को कार्यक्रम का आयोजन हुआ। प्रथम शिक्षा सहायक गैबल नारायण सिंह विश्वविद्यालय, एचएचएफसी व ऑल इंडिया एड्स एडवोकेट्स ऑफ मेडिकल सोशल वर्क के संयुक्त तत्वावधान में बस्ती के बच्चों के बीच पठन सामग्री के साथ वस्त्र का वितरण किया गया। इस संवेधन सेक्टर में कॉन्डिटर बुकिंग ने बताया कि 45 बच्चों को पठन सामग्री के साथ संस्थानों की ओर से वस्त्र का भी वितरण किया गया। इस कार्य से बच्चों में खुशी की लहर रही। मौके पर एचएचएफसी के सदस्य शिवम पांडेय, जोधनएसवू के शिक्षक शीर्ष प्रकाश, डॉ इन्द्रील सरकार आदि उपस्थित रहे।



**RIMS observes World Social Work Day**  
CHRONICLE NEWS SERVICE  
IMPHAL: All India Association of Medical Social Work Professionals, North East Zone on Tuesday observed Community Awareness Programme to mark the World Social Work Day at Neikalong village, Imphal West district. In a release, RIMS media advisor N Phillip Singh informed that the programme was organised under the initiative of All India Association of Medical Social Work Professionals, RIMS, Imphal Chapter zonal secretary W Ranbir Singh. During the programme blood pressure check-up and free medicines were provided to the locals, the release added.

## abies vaccination drive begins today



able in our society", the Minister. Nodal Officers also attended the review meeting, among others. In another session, the Chief Electoral Officer also held a meeting with representatives of different National and State political parties.

**World Social Work Day observed**  
IMPHAL, Mar 19: Joining the rest of the world, the All India Association of Medical Social Work Professionals North East Zone celebrated World Social Work Day 2024 by organising a Community Awareness Programme at Neikalong, Imphal West district on Tuesday. World Social Work Day is observed on the third Tuesday of March every year. It is a day dedicated to highlighting the achievements of social workers and to raising awareness about the importance of social services in society. According to a release issued by RIMS Imphal, the programme was conducted under the initiative of Dr W Ranbir Singh, Zonal Secretary, All India Association of Medical Social Work Professionals, RIMS, Imphal Chapter.

